



542 3Rd Street, Lake Elsinore, CA 92530

TEL: 951-245-8669, FAX: 951-245-5481



MONTE CARLO 2000-2007

U.S. PATENTS

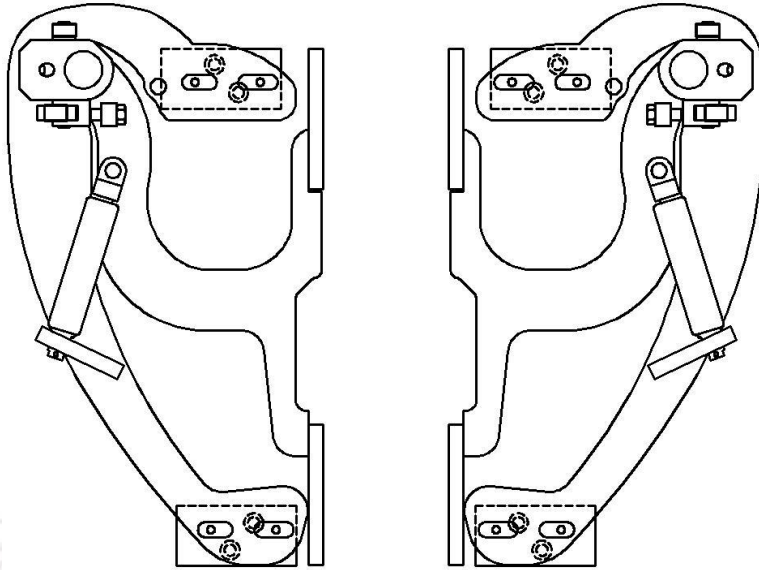
#6,808,223; #6,845,547; #7,140,075; #7,059,655

PATENTS AGGRESSIVELY ENFORCED!

**PLEASE CAREFULLY READ ALL INSTRUCTIONS BEFORE
ATTEMPTING TO INSTALL THIS PRODUCT.**

FOR QUESTIONS PLEASE

CONTACT US AT (951) 245-8669



THIS KIT INCLUDES:

- 16 M8-1.25X30MM BOLTS WITH WASHERS
- 2 SHOULDER BOLTS WITH WASHERS
- 2 PINS
- RIGHT AND LEFT HINGE ASSEMBLY
- 2 SHOCKS 720 PSI

TOOLS REQUIRED FOR INSTALLATION:

	<ul style="list-style-type: none"> ➤ AIR RACHET, GRINDER AND CUTTER.
	<ul style="list-style-type: none"> ➤ 7MM, 8MM, 10MM, 11MM, 13MM, SOCKETS AND EXTENSION.
	<ul style="list-style-type: none"> ➤ FORK AND PHILLIP'S SCREW DRIVERS
	<ul style="list-style-type: none"> ➤ SPACERS FOR THE DOOR GAP.
	<ul style="list-style-type: none"> ➤ 3/16 ALLEN WRENCH
	<ul style="list-style-type: none"> ➤ 1/4 TORX BIT
	<ul style="list-style-type: none"> ➤ 9/16 WRENCH
	<ul style="list-style-type: none"> ➤ LOCKTITE RED

OTHER TOOLS MAY BE NEEDED DEPENDING ON YOUR VEHICLE.

(Note: The pictures on the manual are for reference only they may not match your vehicle.)

1) Disconnect the battery.

2) Remove fender:

You will need to remove the hood by removing the 13mm bolts securing the hood brackets, (You will need a helper) then remove the hood.

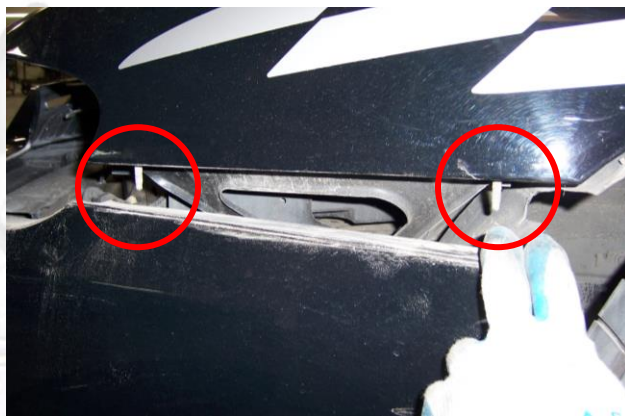
Remove the headlight by pulling on the (2) hold down brackets, once the headlight has been removed you will be able to disconnect the wire harnesses.



Remove all Phillip's screws and plastic fasteners from the wheel well.



Remove the (2) 10mm nuts securing the fender to the bumper, one by pulling back on the wheel well and the other one through the headlight opening.



Now pull on the bumper to gain access to (1) 10mm bolts securing the fender to the body.



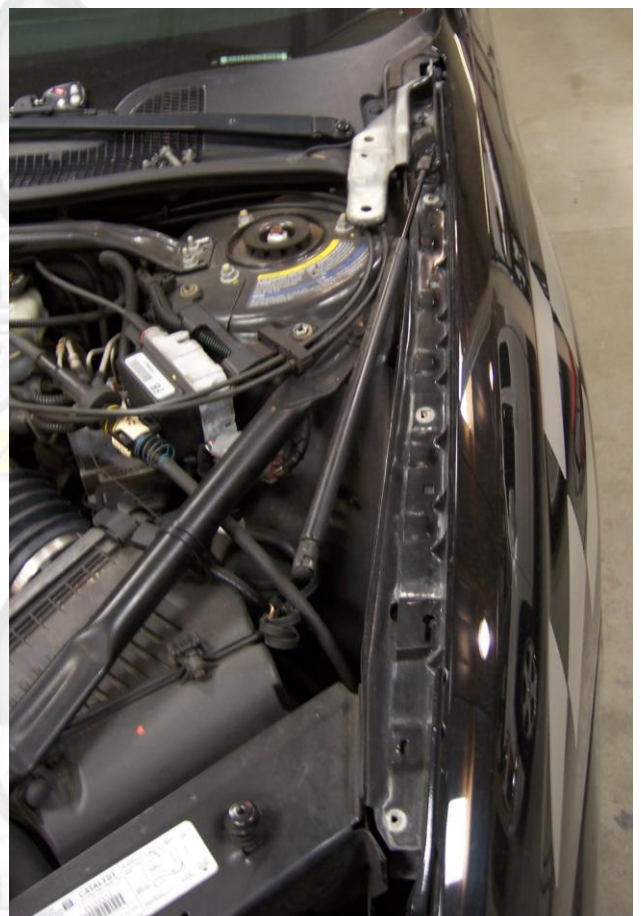
Pull on the wheel well and remove the foam covering the factory hinges and then use a 10mm socket and extension to remove the (2) 10mm bolts located by the factory hinges.



Remove (2) 10mm bolts located at the bottom of the door, securing the fender to the body.



Now remove all the bolts located at the top of the fender. Carefully remove the fender and place it in a safe place.



3) Close door and use painter's tape to secure the door in preparation for factory hinge removal.

Use a 13mm socket to remove the factory hinges.

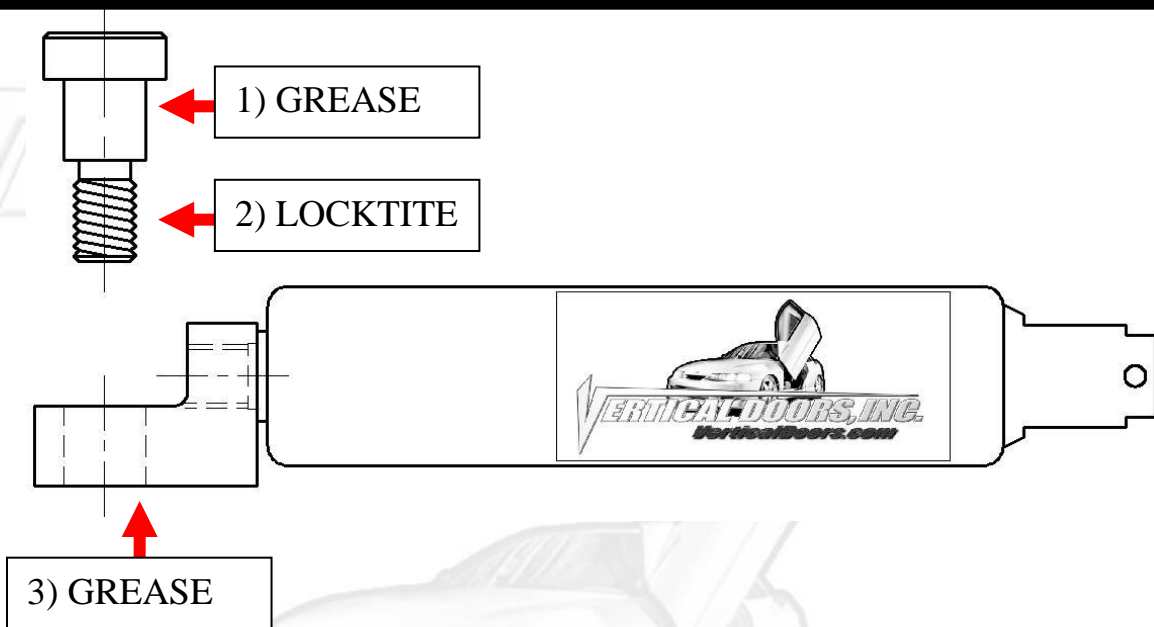
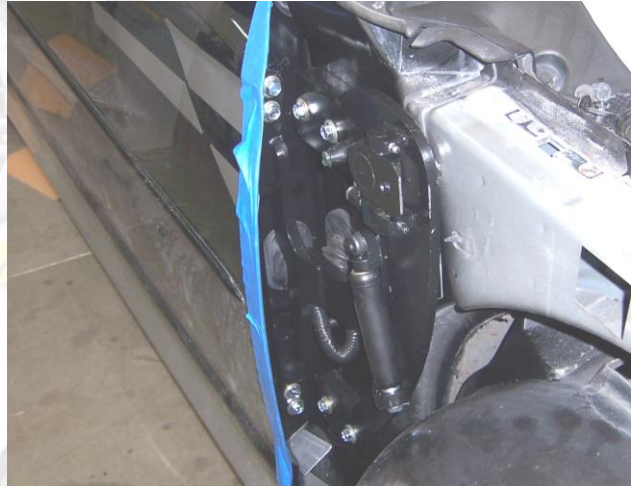
Hint (You can make your spacer out of paint sticks and about 8-10 turns of blue painters tape)*

4) Install new Vertical Doors Inc. system:

In order for the new VDI system to work properly it needs to sit on a flat surface.

You will need to bend the fender hold down bracket as shown. Then you will be able to installed the new VDI system.

Hint Tighten the bolts on the door first and then install the bolts on the body.*

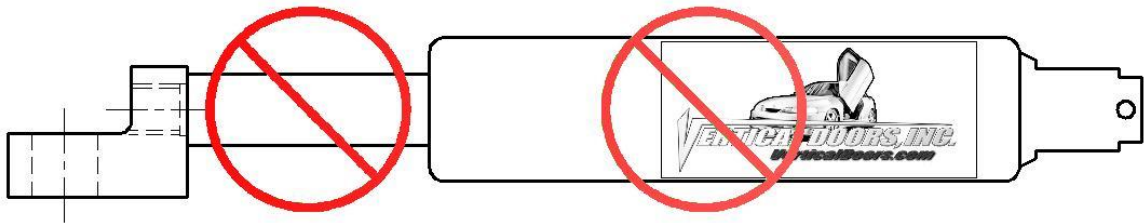


***IMPORTANT STEP: DO NOT SKIP THIS STEP. THIS STEP IS CRUCIAL IN YOUR INSTALLATION PROCESS, IF THIS STEP IS NOT COMPLETED WHEN INSTALLING THE VERTICAL DOOR KIT; ALL WARRANTIES ARE VOIDED, AND MAY CAUSE FUTURE PROBLEMS WITH YOUR VERTICAL DOOR SYSTEM.**

1ST, make sure you put grease on the body of shoulder bolt where the arrow is pointing.

2ND, make sure you put red Loctite, where the arrow is pointing, on thread of shoulder bolt.

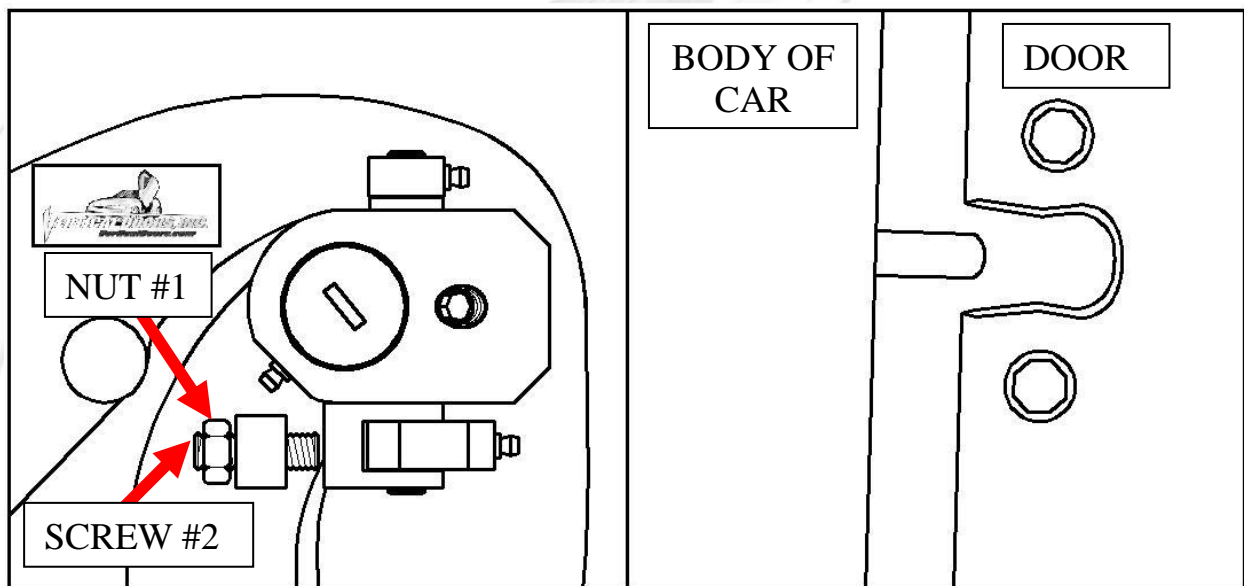
3RD, make sure you put grease on the bottom side of the shock end.



WARNING! THE USE OF ANY TYPE PLIERS, PAINT OR FOREING MATERIALS ON THE SHOCK'S BODY OR SHAFT WILL VOID THE WARRANTY.



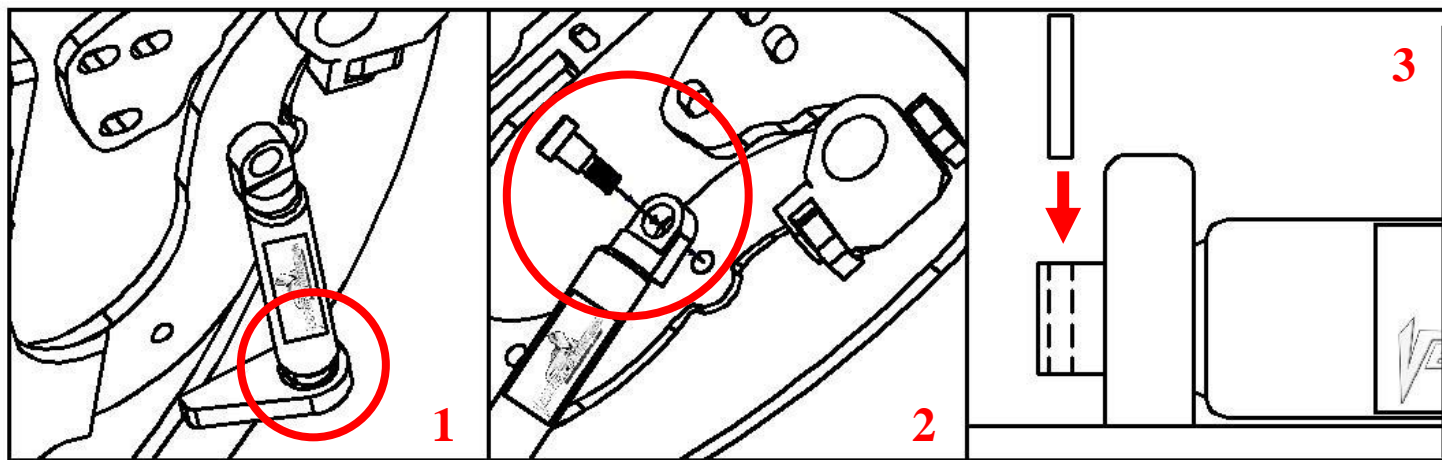
5) Once hinge is locked in place, break nut #1 then turn Allen set screw #2 on fig until it hits the block then open the door and continue to adjust until the door matches with the striker, open and close door making sure it closes like factory.



Hint(leave #1 nut loose until shock is installed Allen set screw will have to be re-adjusted after shock is installed.*



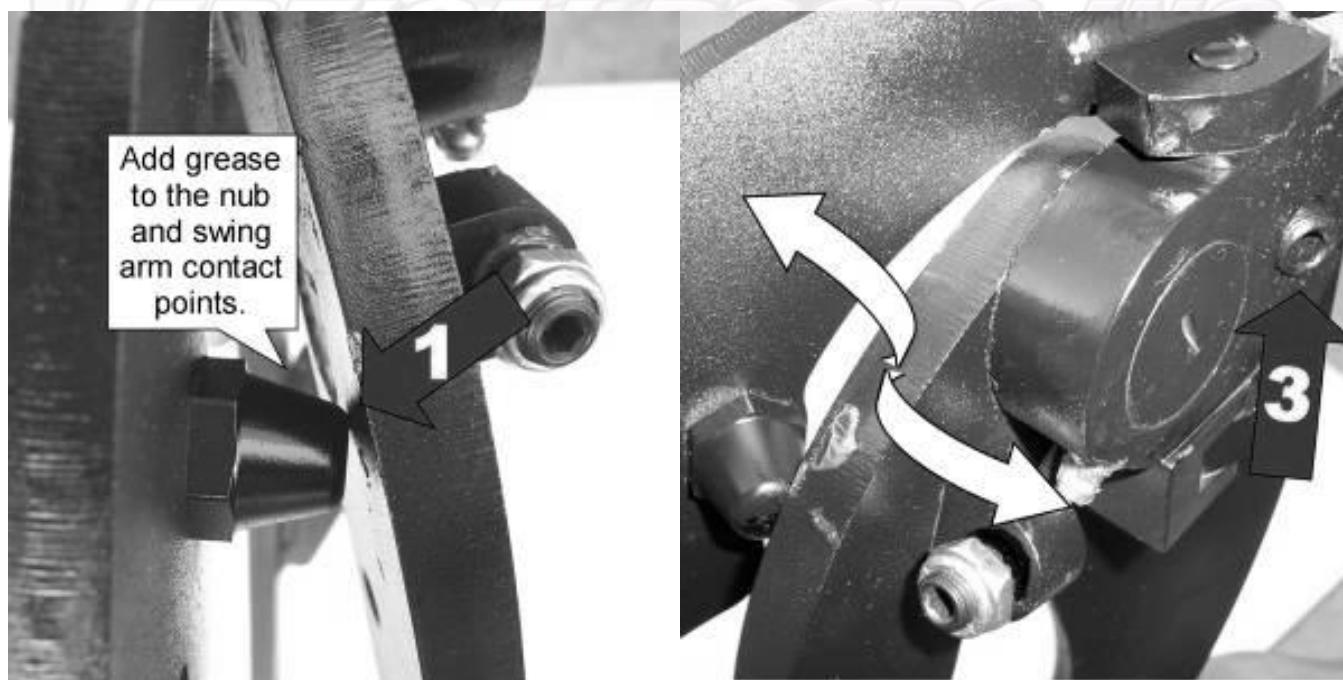
6) Install the shock.



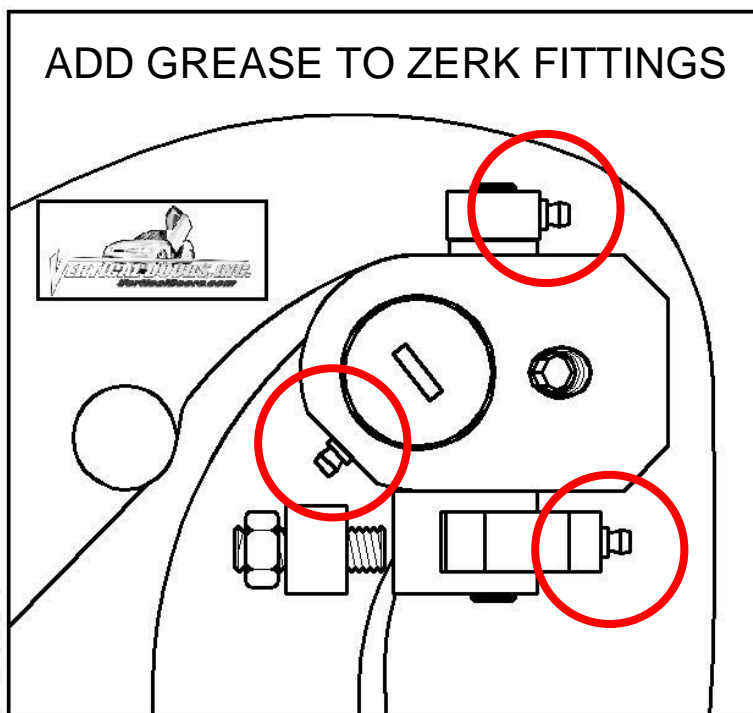
Hint (You will need a helper to raise the door). (Slip the spherical rod mount into the spherical ball bearing (1). Using a 1/4 Allen wrench, tighten the screw into the swing arm (2). After the shock is installed secure it by installing the pin in the bottom shock end (3).*

7) After shock is installed re-install door panel and lift the door. Adjust door opening screw #3 clockwise until distance between nub and swing arm is enough so that the swing arm moves up and down freely.

Hint (Fine tune the Allen Adjustment screw (#2) to realigned striker with door. After the door is align test door by opening and closing, lifting and lowering door several times.*

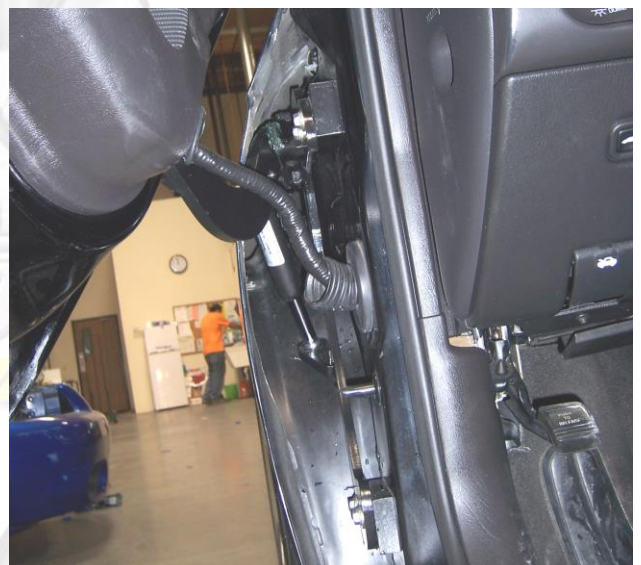


VerticalDoors.com



Note: Do not install fender until the adjustment of the door is accurate, and the set screw is tightly secure. Also make sure everything is tight, adjustment is set and everything is Loctite.

8) Modify factory wire loom:
In order to be able to open and raise the door, cut the factory wire boot in half and add wire loom to protect exposed wires.



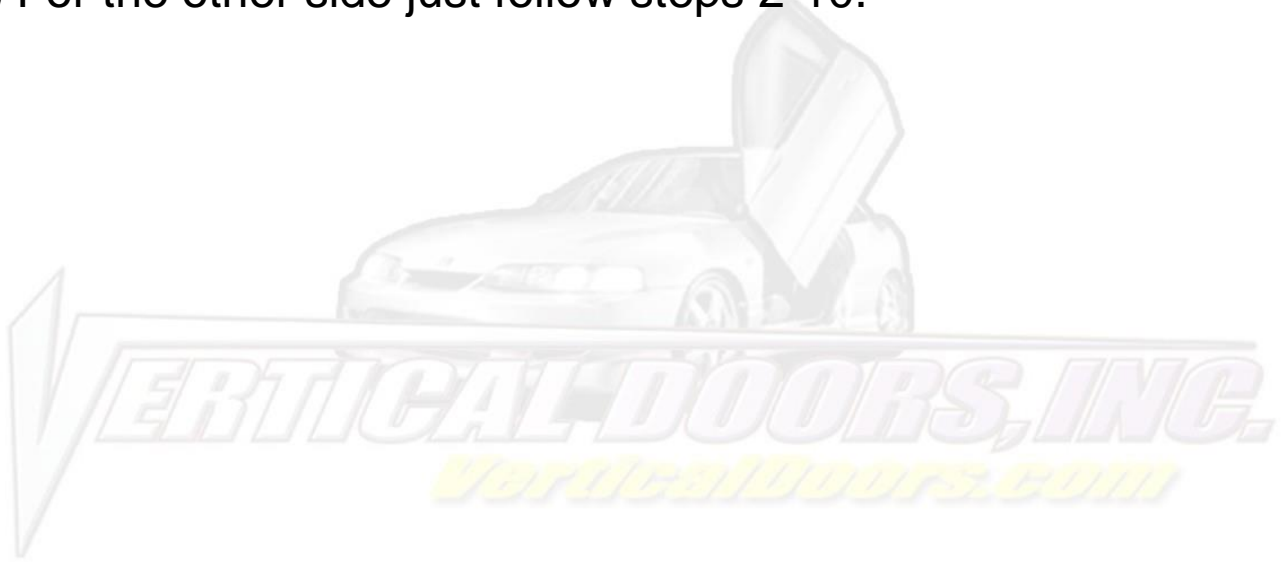
9) Cut the inner lip of your fender to make room for the new Vertical Doors hinge. Note: After you have cut the fender use a sander or grinder and make sure the surface is completely flat.



10) Close the door and replace the fender by reversing step 2.

Hint(Make sure the electrical wires don't get pinched enough to damage wires)*

11) For the other side just follow steps 2-10.





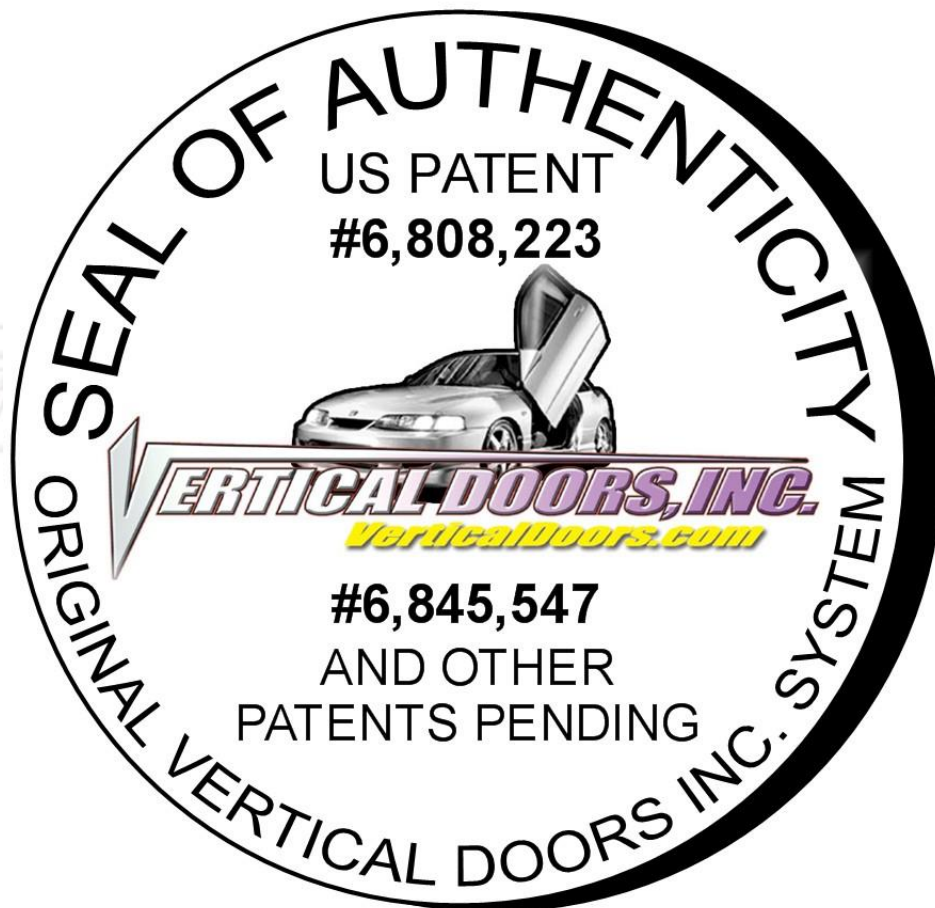


Thank you for your purchase of the
MONTE CARLO
2000-2007

VERTICAL DOORS INC. SYSTEM

Simply Uplifting

VERTICAL DOORS, INC.
VerticalDoors.com



VERTICAL DOORS, INC.
VerticalDoors.com

NOTE:

Vertical Doors Inc. assumes no responsibility for any damages caused by improper installation